

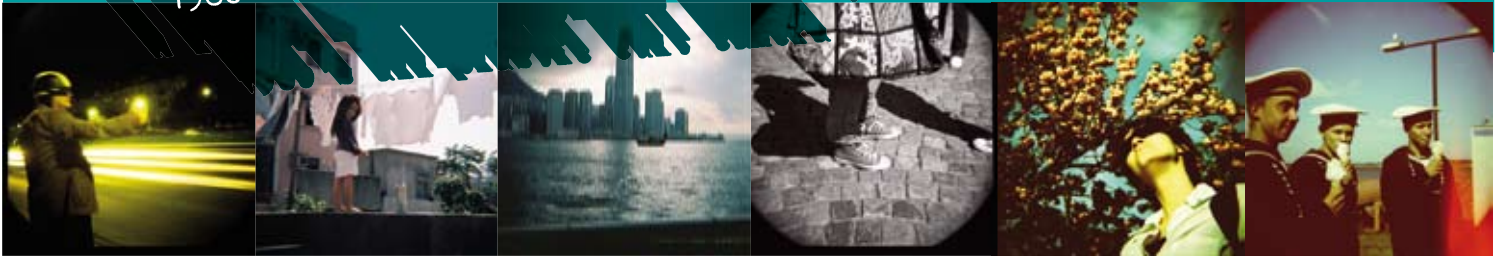
# Diana+

We proudly reintroduce

by **lomography**



A loving recreation of the legendary  
1960's all-plastic cult camera



[www.lomography.com/diana](http://www.lomography.com/diana)

Back in the 1960's, a small firm in Hong Kong – the Great Wall Plastics Factory – created a dirt-cheap 120 camera called the “Diana.” but discontinued it after only a couple of years. As a cult artistic tool of avant-garde photographers, it was a rousing success for its soft & dreamy images – the kind of shots that present a story through super-saturated colors, unpredictable blurring, and random contrast. Among the countless fellow humans who love to use the Diana you will find names like Mark Sink, Allan Detrich and Tony Lim.

In many ways, the Diana is close to our very own beloved Holga camera. But if Holga shots are “Medium Rare,” then the Diana is “Totally Uncooked.”

As the Diana has been out of production for almost 30 years, we decided it was time for a grand comeback! From the beginning, we knew that our reproduction would have to add something to the original and dramatically expand its creative potential. We'd call it Diana PLUS.

## ALL OF THE CLASSIC FEATURES – AND A FEW NEW ONES

- The Plastic Fantastic Diana Lens
- Two Shutter Speeds
- Two Image Sizes  
12 full-frame shots (5.2x5.2cm), or 16 smaller square images – in the classic Diana format (4.2x4.2cm)!
- Multiple and Partial Exposures
- Pinhole Function  
Remove the lens, set the aperture to pinhole and shoot oldest school!
- Endless Panorama Function

### Package includes:

Diana+ Camera  
Diana Photobook  
Manual  
Shutter Release Blocker  
42 x 42 mm frame  
46.5 x 46.5 mm frame

### Details:

Lomography Item Nr.: HP600  
EAN code: 9007710007405

### Contact:

Lomographische AG, Hollergasse 41,  
A – 1150 Wien  
Tel.: +43-(0)1-899-44-0  
Fax: +43-(0)1-899-44-22  
e-mail: [orders@lomography.com](mailto:orders@lomography.com)